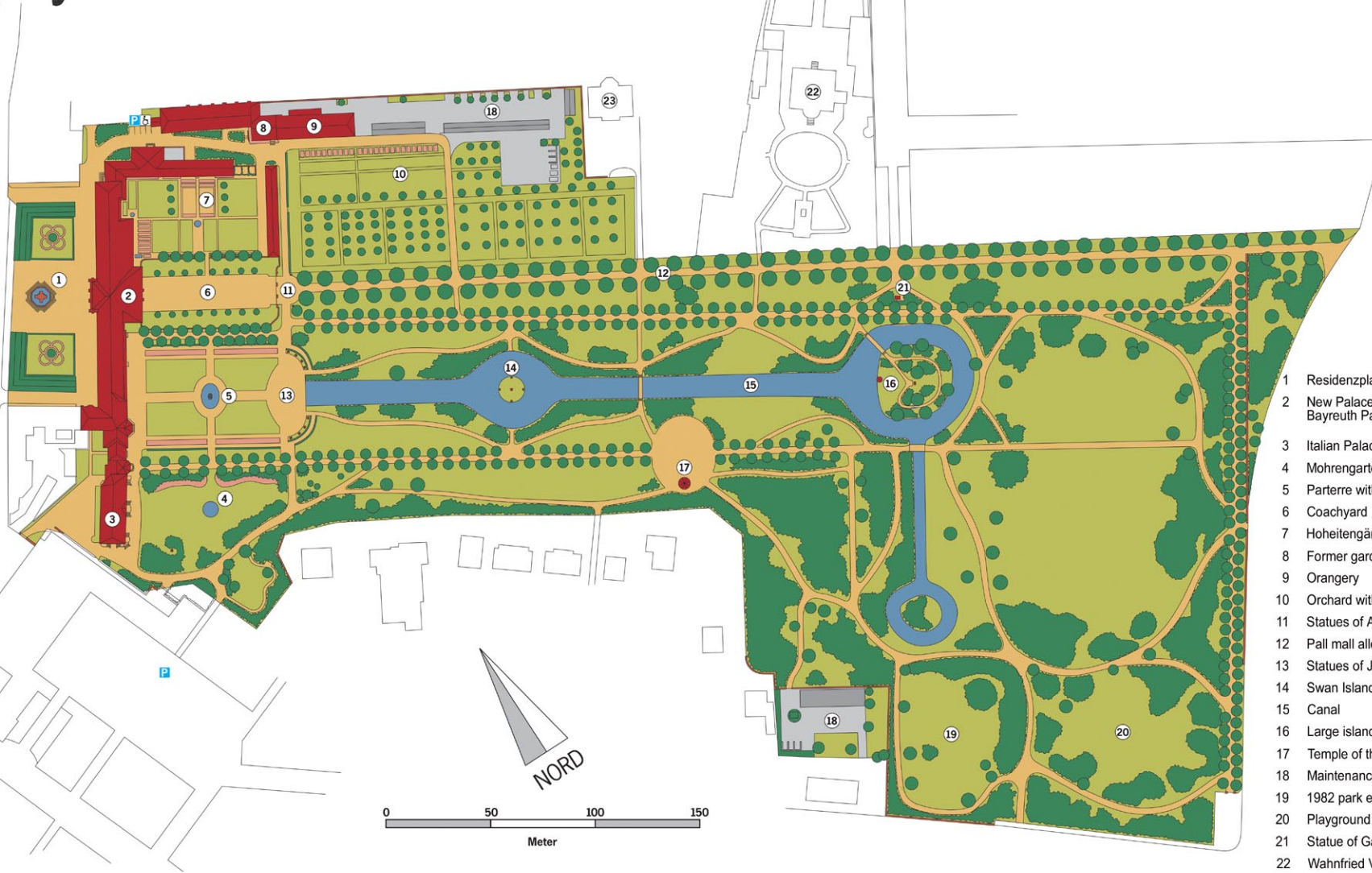


Bayreuth Court Garden



- 1 Residenzplatz mit Margrave Fountain
- 2 New Palace with museums and art collection / Bayreuth Palace and garden administrative office
- 3 Italian Palace
- 4 Mohrgarten with Flora statue
- 5 Parterre with Amphitrite Fountain
- 6 Coachyard
- 7 Hoheitengärtlein (private garden for the margravine)
- 8 Former gardener's house
- 9 Orangery
- 10 Orchard with historic species – former tree nursery
- 11 Statues of Apollo, Minerva, Mars, Hercules
- 12 Pall mall alley
- 13 Statues of Juno, Terpsichore and Melpomene
- 14 Swan Island with Thetis and Tritons statue group
- 15 Canal
- 16 Large island with Water Horse and Poseidon
- 17 Temple of the Sun / Music pavilion
- 18 Maintenance section (not accessible)
- 19 1982 park extension
- 20 Playground on the 1959 extension
- 21 Statue of Galathea
- 22 Wahnfried Villa
- 23 Museum of Freemasonry

Stand: November 2006

